



Madeleine Court, Letchworth Road Stanmore Offers over £324,950

A one bedroom third floor flat available chain free with Davidson Frost-Wellings in Stanmore Place.

The flat comes with an open-plan kitchen / reception room, a double bedroom, a large family bathroom and lots of built-in storage.

Stanmore Place is in an excellent location for Canon's Park tube station. On site and included for tenants is a gym, a children's playground, a 24 hour concierge and a secure parking space.

Leasehold 975 years remaining
Service charge £2,250
Ground rent £250
Harrow council tax band D

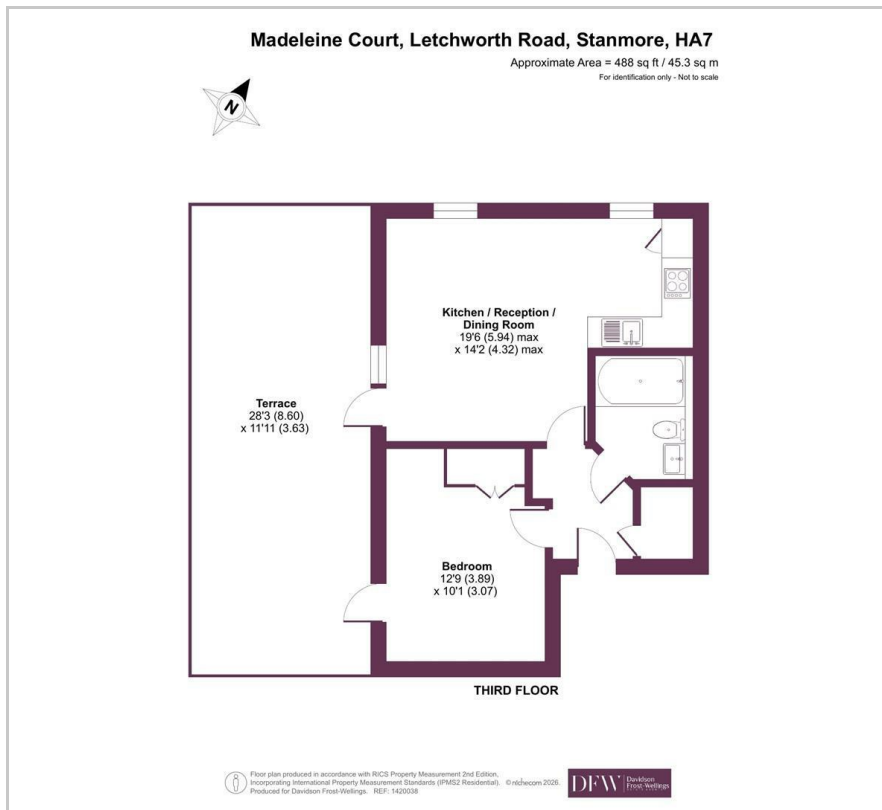
Viewing

Please contact our Davidson Frost-Wellings Office on 020 8954 8806 if you wish to arrange a viewing appointment for this property or require further information.

- One bedroom
- Third floor
- Open plan kitchen
- Bathroom
- Allocated parking
- Chain free



Floor Plan

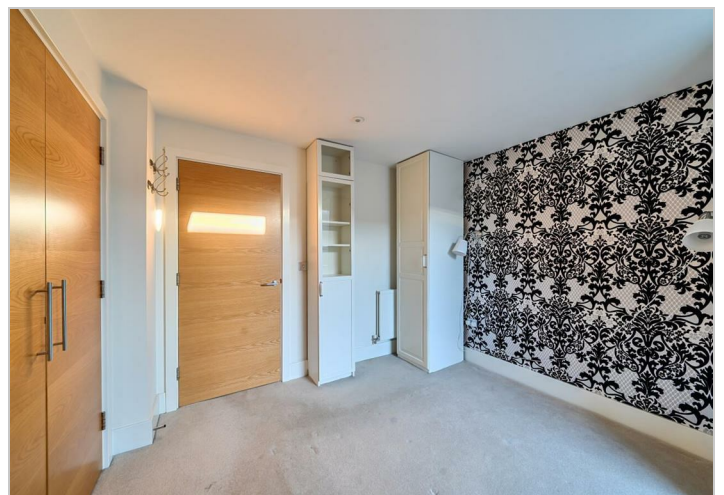
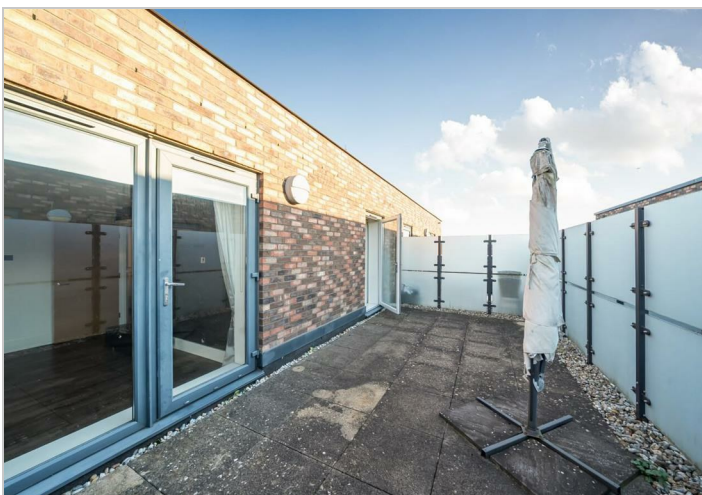


Area Map



Energy Efficiency Rating

	Current	Potential
<i>Very energy efficient - lower running costs</i>		
(92 plus) A		
(81-91) B		
(69-80) C	80	80
(55-68) D		
(39-54) E		
(21-38) F		
(1-20) G		
<i>Not energy efficient - higher running costs</i>		
England & Wales	EU Directive 2002/91/EC	



These particulars, whilst believed to be accurate are set out as a general outline only for guidance and do not constitute any part of an offer or contract. Intending purchasers should not rely on them as statements of representation of fact, but must satisfy themselves by inspection or otherwise as to their accuracy. No person in this firm's employment has the authority to make or give any representation or warranty in respect of the property.